

**PHILIPPINE INSTITUTE OF
TRADITIONAL AND
ALTERNATIVE HEALTH CARE**

LOCATION:
PITAHC Bldg. Matapang St., East
Avenue Medical Center
Compound, Brgy. Central, Quezon
City

CONTENT:
REPAIR OF THE GUTTERS, SOFFITS AND
CEILING OF THE PITAHC BUILDING AND
RELOCATION OF THE DRAINAGE SYSTEM
OF THE AIR CONDITIONING UNITS

PREPARED BY:
Engr. Tom Denmark P. Tabafunda

REVIEWED BY:
Emeline Rose R. Mariano, RMT, MGM-ESP

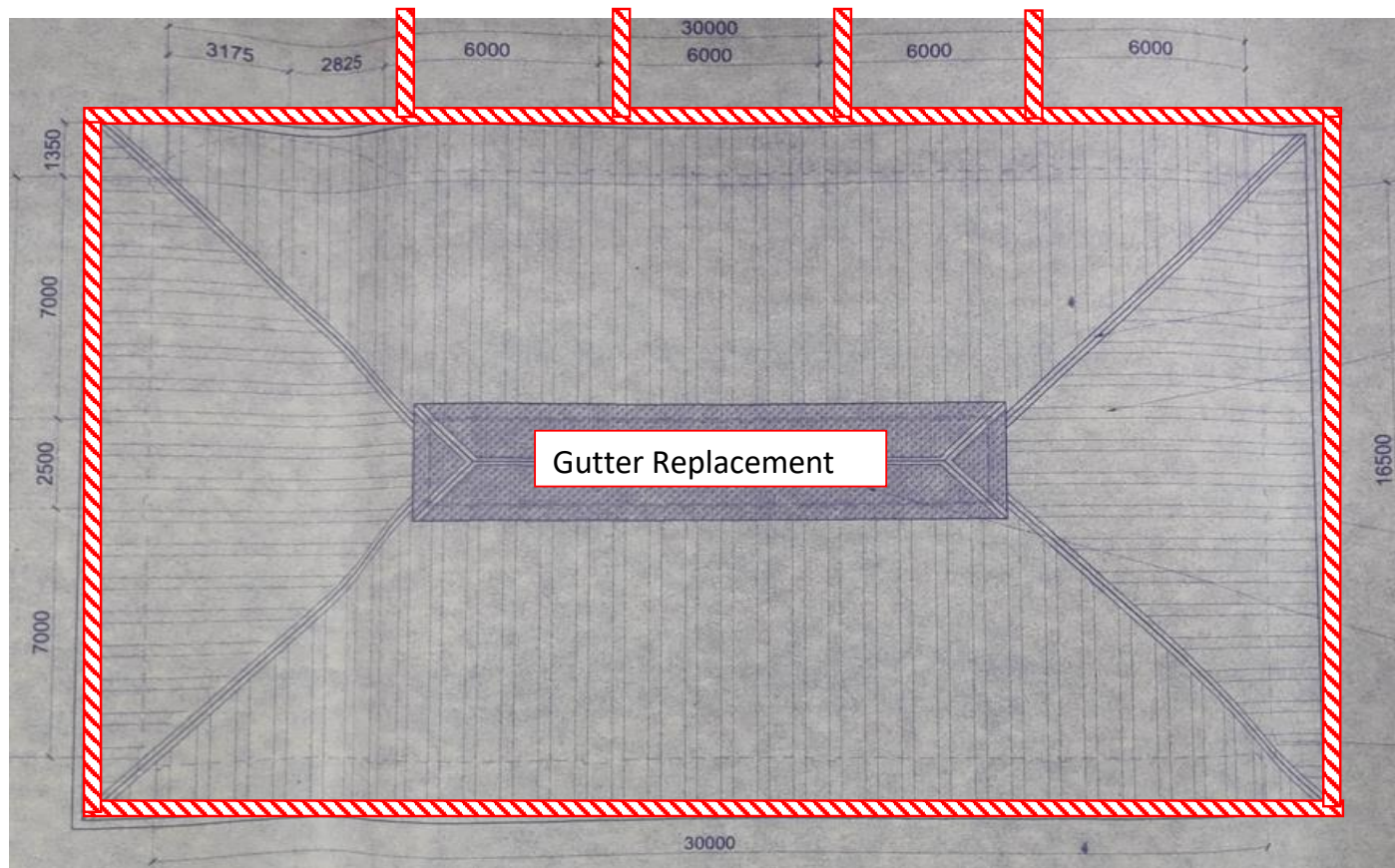
APPROVED BY:
Ma. Teresa C. Iñigo, MD, FPCAM, CESE

DATE:

DWG. NO.:
REV. NO.:

SCALE:
NTS

SHEET NO.:
2
OF SHEET:
4



**PHILIPPINE INSTITUTE OF
TRADITIONAL AND
ALTERNATIVE HEALTH CARE**

LOCATION:
PITAHC Bldg. Matapang St., East
Avenue Medical Center
Compound, Brgy. Central, Quezon
City

CONTENT:
REPAIR OF THE GUTTERS, SOFFITS AND
CEILING OF THE PITAHC BUILDING AND
RELOCATION OF THE DRAINAGE SYSTEM
OF THE AIR CONDITIONING UNITS

PREPARED BY:
Engr. Tom Denmark P. Tabafunda

REVIEWED BY:
Emeline Rose R. Mariano, RMT, MGM-ESP

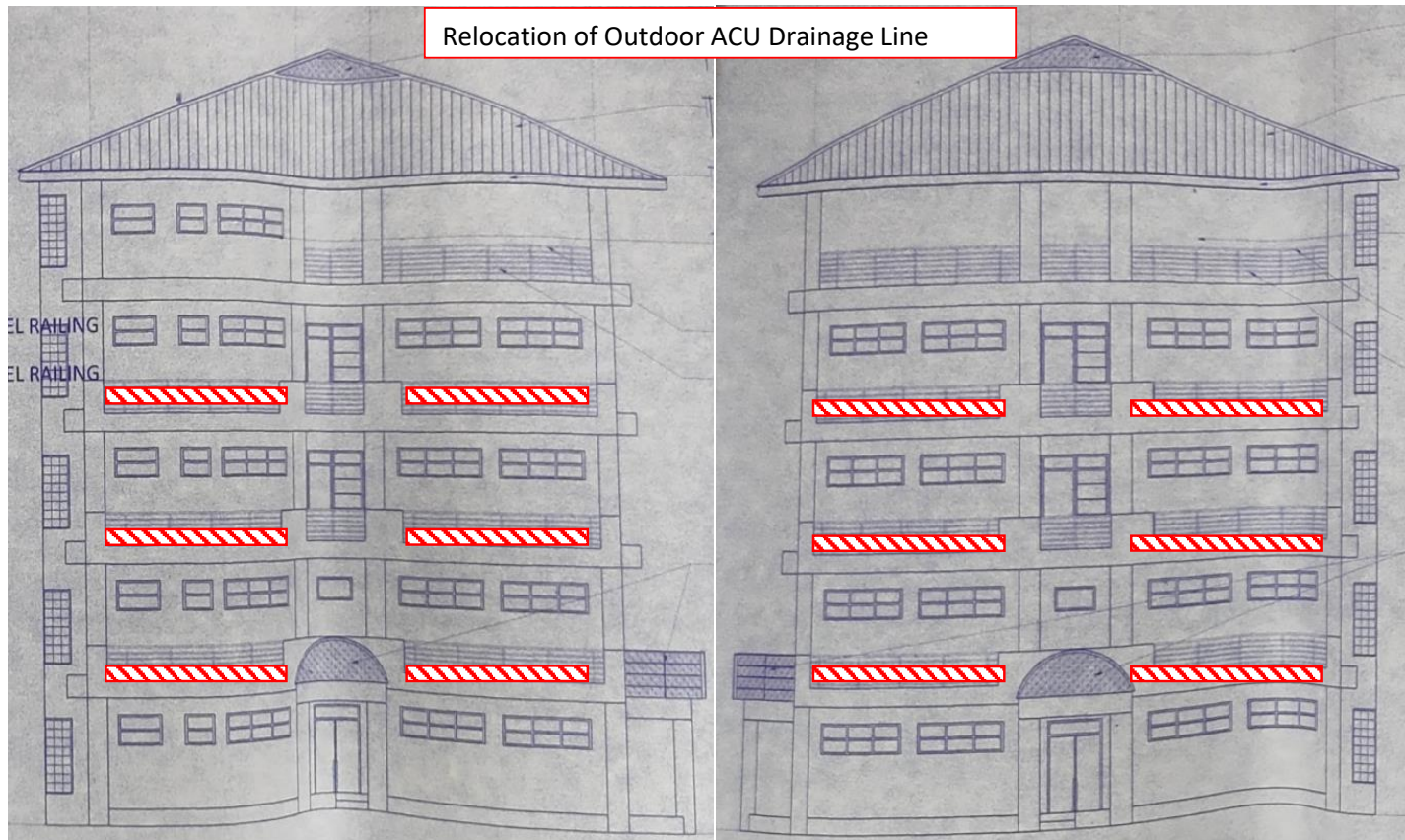
APPROVED BY:
Ma. Teresa C. Iñigo, MD, FPCAM, CESE

DATE:

DWG. NO.:
REV. NO.:

SCALE:
NTS

SHEET NO.:
1
OF SHEET:
4



**PHILIPPINE INSTITUTE OF
TRADITIONAL AND
ALTERNATIVE HEALTH CARE**

LOCATION:
PITAHC Bldg. Matapang St., East
Avenue Medical Center
Compound, Brgy. Central, Quezon
City

CONTENT:
REPAIR OF THE GUTTERS, SOFFITS AND
CEILING OF THE PITAHC BUILDING AND
RELOCATION OF THE DRAINAGE SYSTEM
OF THE AIR CONDITIONING UNITS

PREPARED BY:
Engr. Tom Denmark P. Tabafunda

REVIEWED BY:
Emeline Rose R. Mariano, RMT, MGM-ESP

APPROVED BY:
Ma. Teresa C. Iñigo, MD, FPCAM, CESE

DATE:

DWG. NO.:
REV. NO.:

SCALE:
NTS

SHEET NO.:
4
OF SHEET:
4